



# Alfresco Addons by Zylk.net

[ Alfresco Summit 2013 ]

Cesar Capillas <[cesar@zylk.net](mailto:cesar@zylk.net)>



# Introduction



- **zylk.net** is an open source company based in Bilbao (Spain) specialized in **java** open source product integration and development.
- Its activity covers **portal solutions** (web portal and document management solutions) and **digital signature**.
- From 2010 zylk.net holds the presidency of **E.S.L.E** (Open Source Basque Company Association) and **A.S.O.L.I.F.**



# Alfresco Addons



# What is alfresco addons ?



Alfresco add+ons is the place to find customizations, extensions and related projects for your Alfresco installation

<http://addons.alfresco.com/>



# Addons by Zylk



- Digital signature of PDF files via applet
- Validation of signed PDF and SAR files (Xades)
- Sinadura ECM: CMIS Connector for Alfresco
- CIFS - openLDAP subsystem Addon
- JDBC authentication subsystem Addon
- Login by email in OpenLDAP subsystem
- Online Edition and Digital Signature Addon
- Custom Multi-Search Query Dashlet

<http://addons.alfresco.com/tags/zylknet>



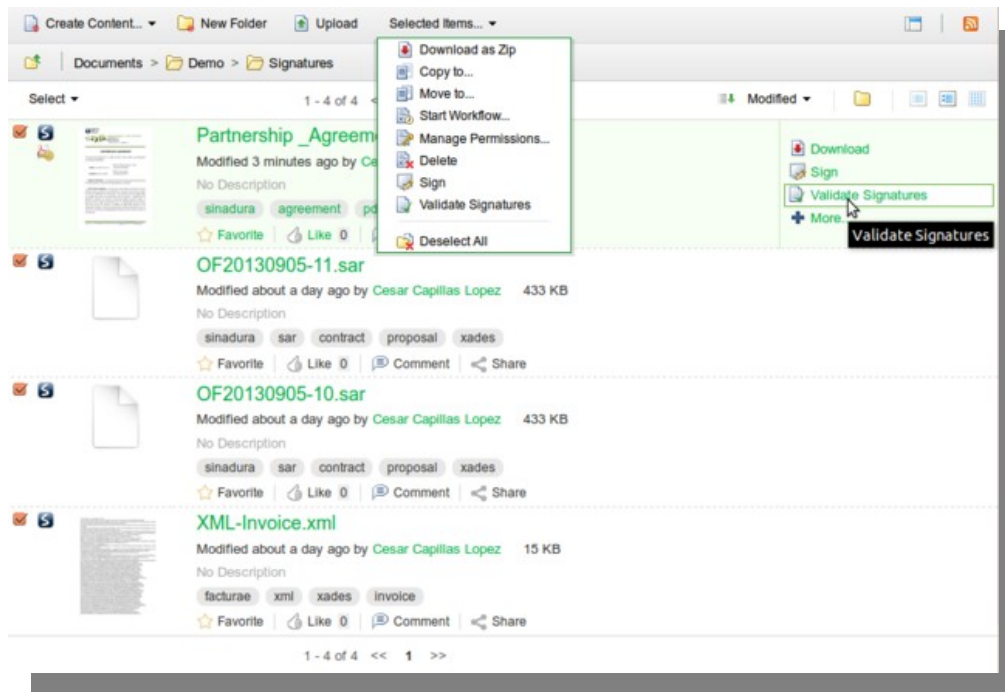
# Digital Signature Addons



# Digital Signature Addon via applet



- This addon provides an applet for **digital signature** in **Alfresco Share**.



[http://www.youtube.com/watch?v=9l-3A2\\_cjkk](http://www.youtube.com/watch?v=9l-3A2_cjkk)

<http://addons.alfresco.com/addons/digital-signature-applet-alfresco-share>

# Alfresco Xades and PDF Validation



- This addon provides **digital signature validation** of PDF and Xades Files (SAR – Sinadura Archives, Digidoc, XML Facturae).
  - Action can be applied on demand for one or multiple files.
  - Rules are applied via action-executer, providing automatic validation of signed files in spaces.
  - Signature data is shown in “Edit Properties”.

<http://addons.alfresco.com/addons/signature-validation-alfresco-share>





# Alfresco Xades and PDF Validation



Name: \*  
Partnership\_Agreement-signed.sar

Title:

Description:

Mimetype:  
SAR Signature File

Author:

Tags:

Digital signatures information

Status	Signer	Date	Details
✓		10:48:46 19-09-2013	<ul style="list-style-type: none"><li>✓ The signature made by the signer certificate is valid.</li><li>✓ El tipo de firma del documento es: XAdES_T</li><li>✓ The date is reliable because it was stamped with a trusted time stamp authority (TSA).</li><li>✓ The signer was emitted by a trusted authority.</li></ul>



# Alfresco Xades and PDF Validation



Repository Browser

Location: Repository > Zylk > Documents > Payslips

Payslips: Rules New Rule Run Rules... ▾

Rules from Payslips

*Drag rules and click Save to reorder.*

1	✓	<b>Validation of XADES signed files</b> Validation of SAR files (Sinadura/Signature ARchive Format File for Xades)
---	---	---

Save Reset

Edit Delete

**Validation of XADES signed files**

Description: Validation of SAR files (Sinadura/Signature ARchive Format File for Xades)

- ✓ Active
- ✓ Run in background
- ✓ Rule applied to subfolders

**When:**

Items are created or enter this folder

▼

**If all criteria are met:**

Mimetype in cm:content is 'SAR Signature File'

▼

**Perform Action:**

Validate Signatures



# Sinadura CMIS for Alfresco ECM



- Sinadura ECM is a digital signature java client with a **CMIS connector** for Alfresco ECM:
  - Upload PDFs to custom default path.
  - Upload PDFs to a custom path (selected from a browser).
  - Download, Upload and Update PDF.
  - Create space/folder and delete PDFs.

<http://addons.alfresco.com/addons/sinadura-pdf-digital-signature-client-alfresco-ecm>

# Sinadura CMIS for Alfresco ECM

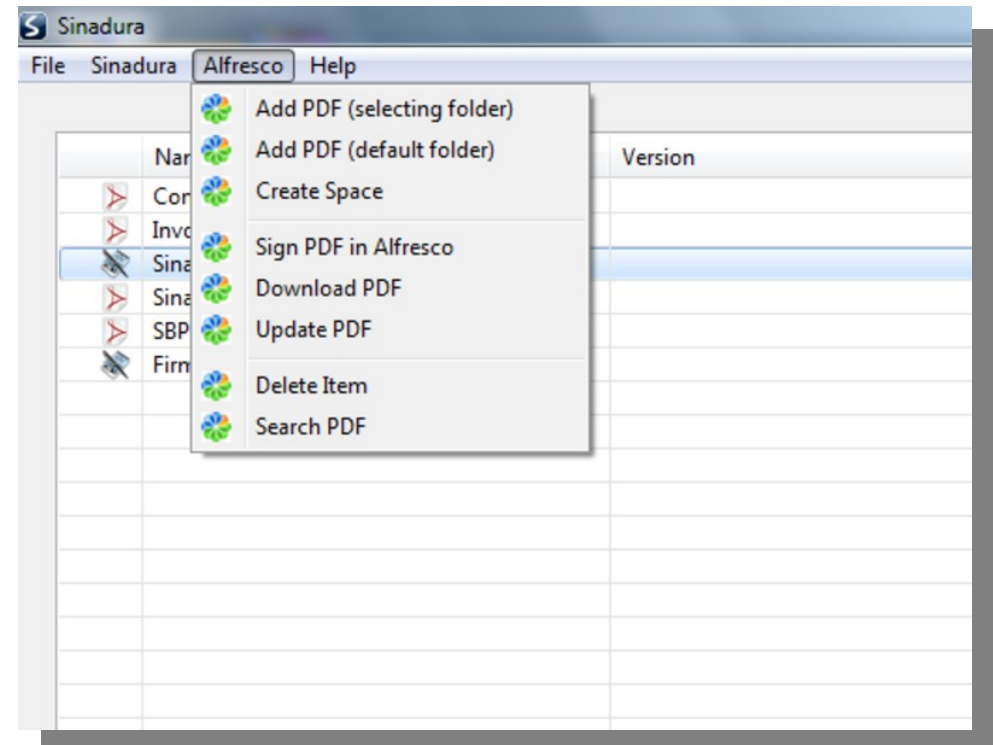
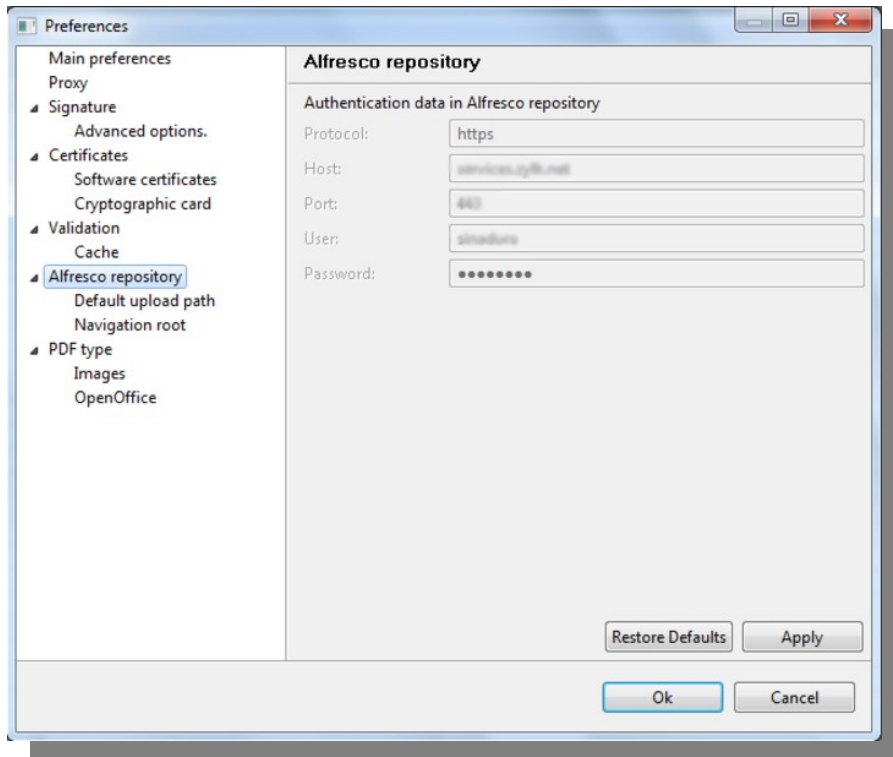


The screenshot displays the Sinadura application interface. The main window shows a table of documents with columns for Name, Version, Signer, Date, and Pat. A 'Choose File' dialog box is open, showing a file tree with folders like 'Payslips', 'Minutes', and 'Presentations', and files like 'sinaduramobile.pdf', 'Sinadura\_OSWC2012.pdf', 'FirmaDigitalSinadura.pdf', 'ef4ktur.pdf', 'SBP\_SSE\_v3.pdf', and 'Sinadura\_Cebit2012\_en.pdf'. A log window at the bottom shows the following messages:

- 16:38:29 The file has been downloaded successfully from /Espacio de empresa/Sitios/sinaduraecm/documentLibrary/SBP\_SSE\_v3.pdf
- 16:38:37 The file has been downloaded successfully from /Espacio de empresa/Sitios/sinaduraecm/documentLibrary/FirmaDigitalSinadura.pdf
- 16:39:44 The document "C:\Users\ZYLK\AppData\Local\Temp\Sinadura\_OSWC2012.pdf" has been correctly signed.
- 16:39:44 Remember update the signed document
- 16:39:51 The document "C:\Users\ZYLK\AppData\Local\Temp\FirmaDigitalSinadura.pdf" has been correctly signed.
- 16:39:51 Remember update the signed document



# Sinadura CMIS for Alfresco ECM



<http://www.zylk.net/es/web/guest/web-2-0/blog/-/blogs/sinadura-ecm-demo-videos>



# Authentication Addons



# Alfresco JDBC Subsystem



- This addon provides **an authentication subsystem** for Alfresco 3.4.x and 4.x for a custom table of users in an external database.
  - It is designed **for users integration between an Alfresco repository and a custom application.**
  - You can use it **with any type of database** (mysql, postgresql, oracle....)
  - **You can also use CIFS** with this authentication if your password field is stored in MD4.

<http://addons.alfresco.com/addons/alfresco-custom-jdbc-authenticator>



# Alfresco JDBC Subsystem



## # Chain authentication

```
authentication.chain=alfrescoNtlm1:alfrescoNtlm,myjdbc:jdbc
```

## # Default connection

```
jdbc.driver=org.gjt.mm.mysql.Driver  
jdbc.username=root  
jdbc.password=secret  
jdbc.name=mydb  
jdbc.url=jdbc:mysql://localhost:3306/mydb  
jdbc.query=SELECT password FROM myusers WHERE id='{1}'
```

## # Default administrators

```
jdbc.authentication.defaultAdministratorUserNames=zylk,mysql
```

## # CIFS

```
# If jdbc.authentication.cifs.active = true set  
jdbc.authentication.password.type = md4  
jdbc.authentication.cifs.active=true
```

## # Password storage / encryption type in DB: plain|md5|md4|DES|jcrypt

```
jdbc.authentication.password.type=md4
```





# CIFS - OpenLDAP Subsystem



- This addon provides an **authentication subsystem** for Alfresco 3.4.x and 4.x for using CIFS with openLDAP users
  - Each LDAP user needs to store the password as an MD4 hash (using sambaSamAccount object class to the user profile)

<http://addons.alfresco.com/addons/alfresco-cifs-authenticator-openldap-users>



# CIFS - OpenLDAP Subsystem



## **# Chain authentication**

```
authentication.chain=myldap:ldap,ldapSamba1:ldapSamba
```

## **# LDAP Connection properties**

```
ldap.samba.authentication.java.naming.provider.url=ldap://ldap.example.com:389  
ldap.samba.authentication.base=dc=example,dc=com  
ldap.samba.authentication.userbase=ou=People
```

## **# The user defined below must be able to execute user search queries in LDAP (administrator)**

```
ldap.samba.java.naming.security.principal=cn=admin,dc=example,dc=com  
ldap.samba.java.naming.security.credentials=secret
```



# Login by email in Alfresco



- This addon allows to login in Alfresco Share with the email property (openLDAP subsystem).

<http://addons.alfresco.com/addons/login-alfresco-ldap-email-address>

# Other Addons



# Edit online with Libreoffice

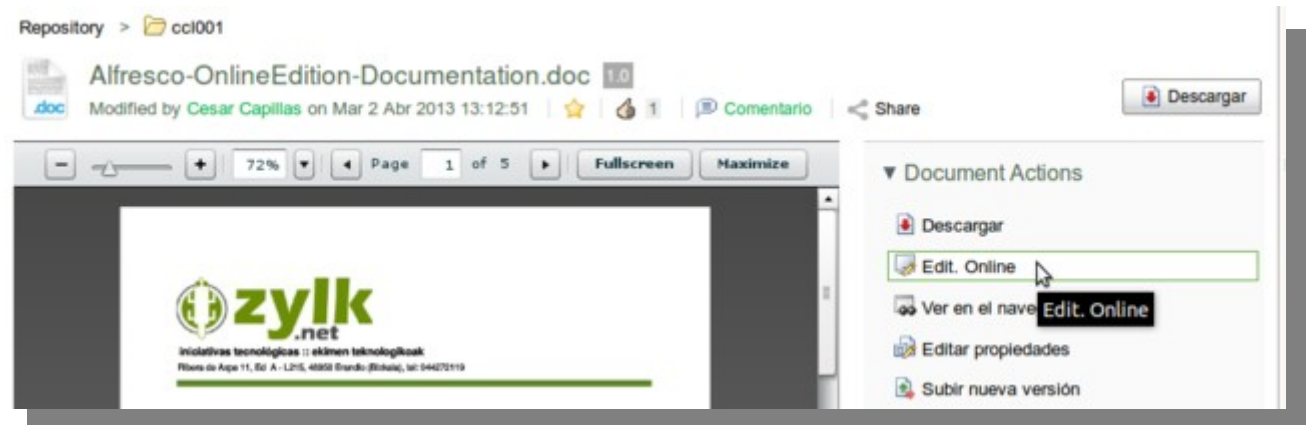
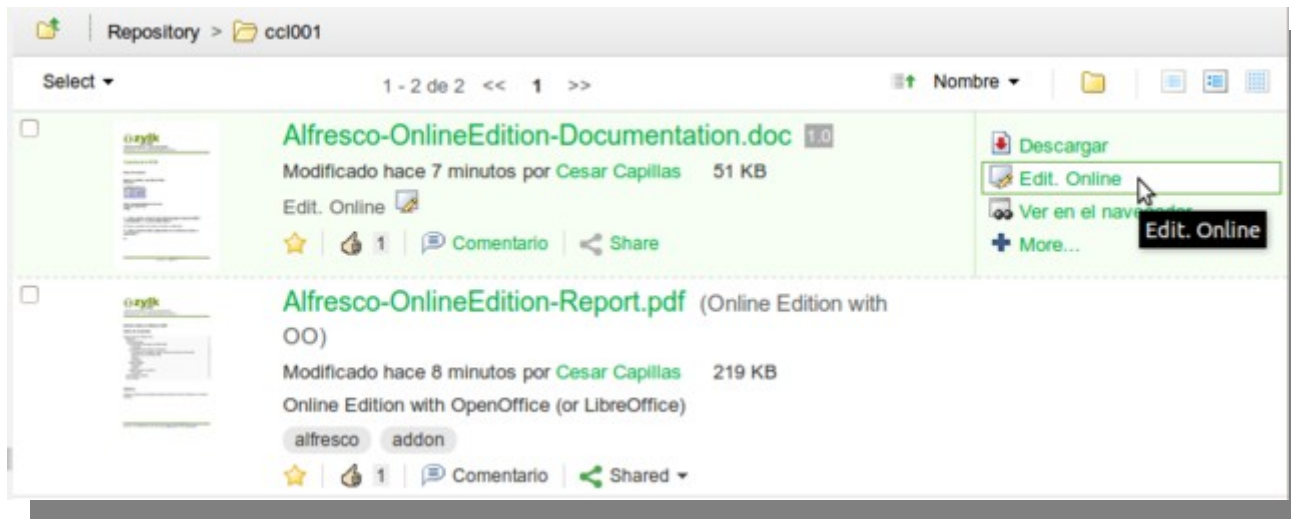


- Edit online Online with Libreoffice via webdav
- **It provides dav:// and http:// webdav links** for Office and MS Office mimetypes in Alfresco Share.
- Url schemes dav:// are configured in OS / client
- It works with the next stacks:
  - Linux && Firefox && Libreoffice
  - Windows && Firefox && Libreoffice
  - Windows && IE && MS Office

<http://www.youtube.com/watch?v=dd9mT5WbCyk>



# Edit online with Libreoffice



<http://code.google.com/p/alfresco-share-online-edition-addon/>

# Custom MultiSearch Query Dashlet

- Very Soon!
- Dashlet for custom lucene searches defined in Data Dictionary.
- Multi-instance for user panel and site panel.
- Custom dashlet logical views by category, tag or custom lucene query.



**Thank you!**

**<http://www.zylk.net>**

**@zylk.net**

